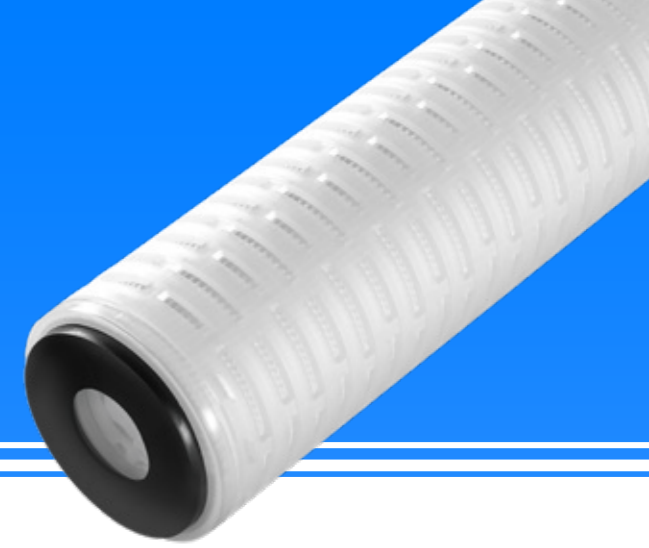


# PTFE SERIES PLEATED FILTER CARTRIDGE (Hydrophobic)



# PTFE SERIES PLEATED FILTER CARTRIDGE (Hydrophilic)



## Product Description

### Excellent Hydrophobic Performan

OPTMC series pleated filter cartridge is made of imported modified hydrophobic polytetrafluoroethylene filter membrane through advanced hot melt sealing technology under the associated controlled clean environment without any adhesives or surfactants. The modified hydrophobic PTFE filter cartridge strictly controls the metal ion dissolution and has high resistance of repeated high-pressure disinfection and steam sterilization.

It features extensive chemical compatibility (strong acid and strong alkali resistance), high temperature resistance, low dissolution, low adsorption etc.

OPTMC series is suitable for the filtration process of ultra-pure water, acid, alkali, salt, and other corrosive liquid filtration, high temperature liquid, and also nitrogen, argon and other gas filtration in the chemical, pharmaceutical, food and beverage, electronic chemicals and other industries.

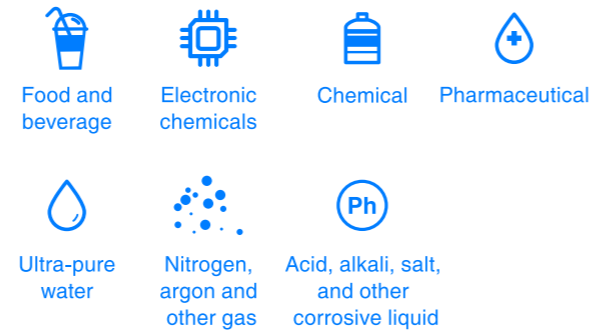
## Features

- Excellent high temp.resistance and extensive chemical compatibility
- Natural strong hydrophobic structure, applicable for the absolute gas sterilization and filtration
- Excellent particle capture performance, particle interception efficiency is up to 99.99%
- High flux, low extractables, low pressure drop, and long service life
- Passed the bacterial challenge test, LRV>7.
- The limitations of integrity were correlated with the results of bacterial challenge testing

## Technical Data

Product code	Retention ratings (µm)	Filter area (m²)	Length (inch)	Diameter (mm)	Max. operating temp (°C)
OPTMC	0.1, 0.22, 0.45,	0.65	5" 10" 20" 30" 40"	2.75"- 69	80
Max. differential pressure	Sterilization method (°C / h)	Typical flow rate (Nm³ / h)			
Positive : 0.4MPa / 25°C Negative : 0.2MPa / 25°C	121°C/100h 140°C/40h	0.1µm: ≥ 180 0.22µm: ≥ 330 0.45µm: ≥ 400 Remark : P=0.2MPa, ΔP=0.01MPa, 10',20°C			

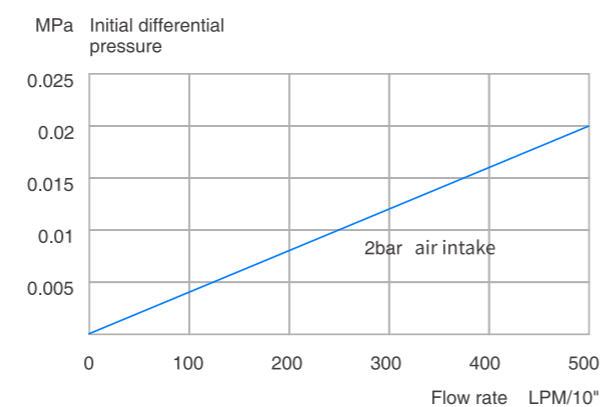
## Application



## Structural Material

Filter medium	PTFE
Support	PP
Core/ Cage	PP
End cap	PP
Connection	DOE, 222-Flat, 226-Flat, 222-Fin, 226-Fin, 222-Fin(304BI), 226-Fin(304BI)
Seal rings options	BUNA, EPDM, Silicon, Viton

## Flow Rate Characteristics



## Product Description

### Excellent Hydrophilic Performance

IPTMC series pleated filter cartridge is made of imported hydrophilic modified polytetrafluoroethylene filter membrane through advanced hot melt sealing technology under the associated controlled clean environment without any adhesives or surfactants. The modified hydrophilic PTFE filter cartridge can directly filter aqueous solutions without pre-wetting.

It features extensive chemical compatibility (strong acid and strong alkali resistance), high temperature resistance, low temperature resistance, low extractables, low adsorption, etc.

IPTMC series is suitable for the filtration process of high pure liquid filtration, acid, alkali, salt, and other corrosive liquid filtration, high temperature liquid in the chemical, pharmaceutical, food, electronic chemical and other industries.

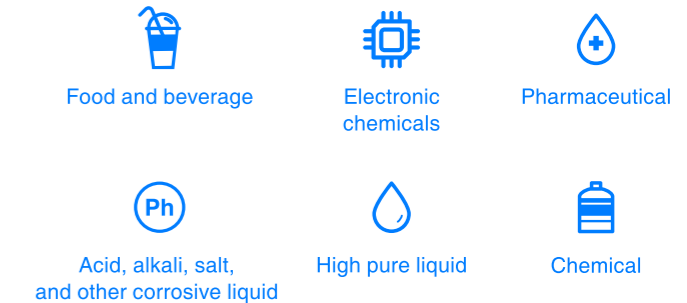
## Features

- Excellent high temperance resistance and extensive chemical compatibility.
- Strong hydrophilic structure, easy to operate without pre-wetting
- Excellent particle capture performance, particle interception efficiency is up to 99.99%
- High flux, high flow rate, low extractables, low pressure drop, and long service life
- Passed the bacterial challenge test,LRV>7.
- The limitations of integrity were correlated with the results of bacterial challenge testing

## Technical Data

Product code	Retention ratings (µm)	Filter area (m²)	Length (inch)	Diameter (mm)	Max. operating temp (°C)
IPTMC	0.1, 0.22, 0.45,	0.65	5" 10" 20" 30" 40"	2.75"- 69	80
Max. differential pressure	Sterilization method (°C / h)	Typical flow rate (Nm³ / h)			
Positive : 0.4MPa / 25°C Negative : 0.2MPa / 25°C	121°C/100h 140°C/40h	0.5			

## Application



## Structural Material

Filter medium	Hydrophilic Modified PTFE
Support	PP
Core/ Cage	PP
End cap	PP
Connection	DOE, 222-Flat, 226-Flat, 222-Fin, 226-Fin, 222-Fin(304BI), 226-Fin(304BI)
Seal rings options	BUNA, EPDM, Silicon, Viton

## Flow Rate Characteristics

